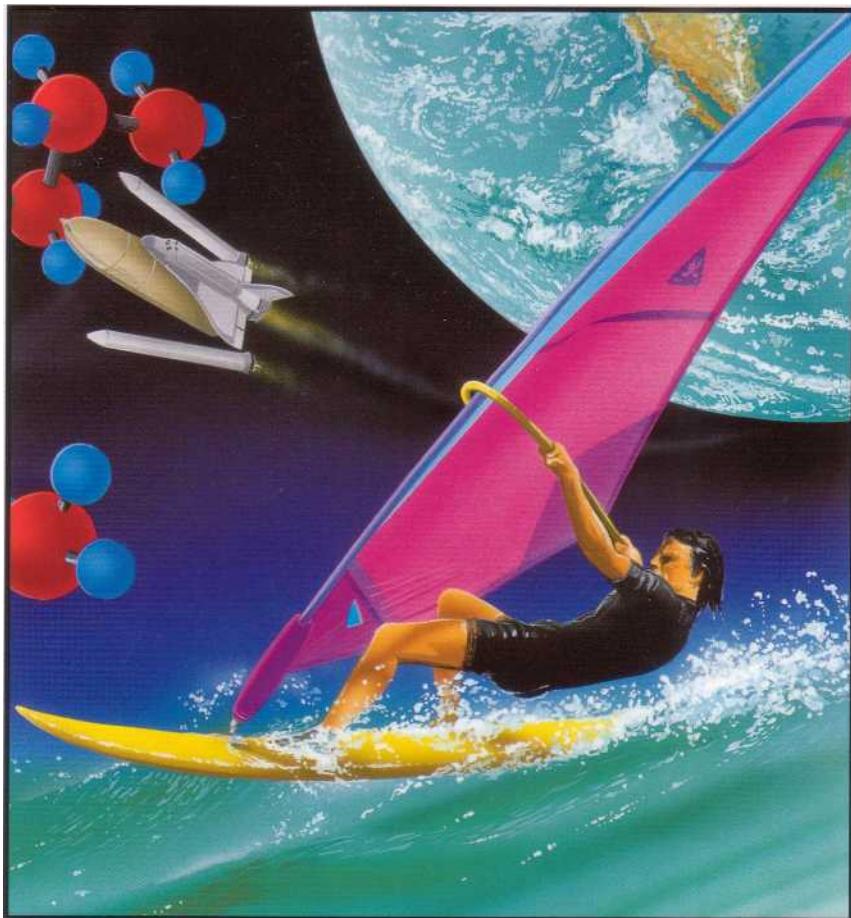


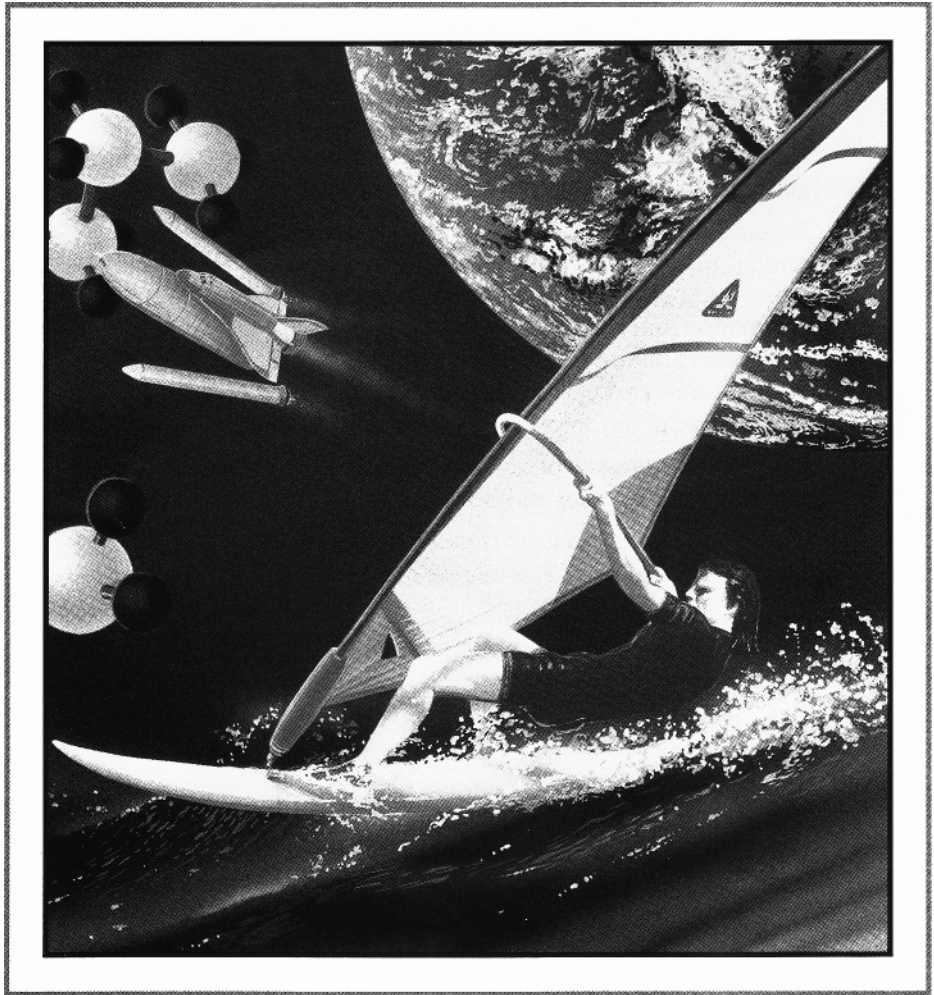
# Acorn PC Exchange

## User Guide



# Acorn PC Exchange

## User Guide



Acorn 

Copyright © 1995 Acorn Computers Limited. All rights reserved.

Published by Acorn Computers Technical Publications Department.

No part of this publication may be reproduced or transmitted, in any form or by any means, electronic, mechanical, photocopying, recording or otherwise, or stored in any retrieval system of any nature, without the written permission of the copyright holder and the publisher, application for which shall be made to the publisher:

The product described in this manual is not intended for use as a critical component in life support devices or any system in which failure could be expected to result in personal injury.

The product described in this manual is subject to continuous development and improvement. All information of a technical nature and particulars of the product and its use (including the information and particulars in this manual) are given by Acorn Computers Limited in good faith. However, Acorn Computers Limited cannot accept any liability for any loss or damage arising from the use of any information or particulars in this manual.

If you have comments on this manual, please complete the form at the back of the manual and send it to the address given there.

Acorn supplies its products through an international distribution network. Your supplier is available to help resolve any queries you might have.

ACORN and the ACORN logo are trademarks of Acorn Computers Limited.

Director is a trademark of Macromedia Inc

Genesis is a trademark of Oak Solutions Ltd

Magpie is a trademark of Longman Logotron

Photodesk is a trademark of Spacetech

Windows, the Windows logo and Encarta are trademarks of Microsoft Corporation

All other trademarks are acknowledged.

Published by Acorn Computers Limited

Part number 1407,120

Issue 1, October 1995

# Contents

## **Acorn PC Exchange 1**

Overview 1

Installing PCEX 2

Starting the Acorn PC Exchange software 4

What types of data can Acorn PC Exchange handle? 5

Copying data onto the Windows clipboard 6

Using Windows clipboard data 6

More about the PC Exchange window 7

Release note information 9



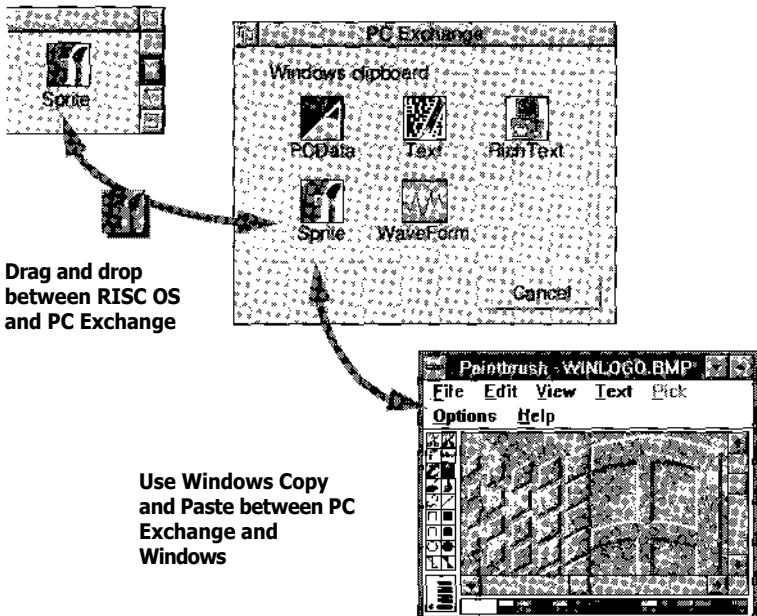
# Acorn PC Exchange



If you have a Risc PC x86 card fitted to your machine, Acorn PC Exchange makes it simple to exchange text, pictures and sound files between the RISC OS and Windows (3.1 and 3.11) environments. This opens up a new world of creativity. For example, you can use the power of RISC OS to manipulate resources from Windows multimedia applications, rather than just browsing.

## Overview

The PC Exchange window gives you a graphical representation of the contents of the Windows clipboard. You can transfer data between RISC OS and Windows using the PC Exchange window.



For example, you could Copy a picture from Encarta to the Windows clipboard, then drag and drop it from the PC Exchange window into a RISC OS multimedia application (such as Genesis or Magpie), or modify it using a sprite editor (such as Paint or Photodesk).

Alternatively, you could drop a RISC OS sound file onto the PC Exchange window and Paste it from the Windows clipboard straight into a suitable Windows application.

## Installing PCEX

You need to install Acorn PC Exchange software in both the Windows and RISC OS environments.

### RISC OS installation

To perform the RISC OS installation:

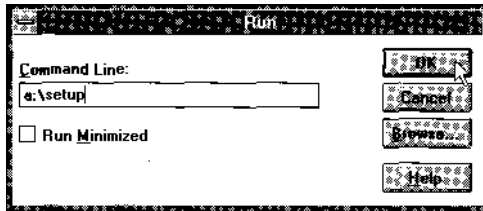


- 1 Insert Software disc 1 into the floppy drive and click on the floppy drive icon on the icon bar:
- 2 Open the root directory display for your hard disc, click Menu and make sure **Options/Force** is off and **Options /Newer** is on (if you want, you can return them to their original settings after the next step).
- 3 Drag the !Boot icon from the floppy disc directory display and copy it onto your existing !Boot (do not delete your existing !Boot).
- 4 Double-click on the !Boot icon in the root directory display of your hard disc to start the Configure application.
- 5 Click on the System icon in the Configuration window and merge the new !System from the floppy disc with your existing one, as instructed.
- 6 Copy the !PCEX application from the floppy disc onto your hard disc (e.g. into the Apps directory).
- 7 Remove the floppy disc.
- 8 Shut down and reset your computer:

## Windows installation

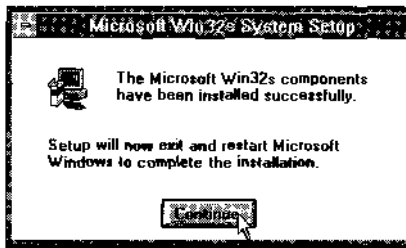
This installs the Windows part of Acorn PC Exchange software.

- 1 If it's not already running, load the PCx86 application and start Windows. If Windows is already running, save any work you're doing and quit any Windows applications.
- 2 Insert Software disc 2 in the floppy disc drive.
- 3 Choose File/Run... from the Windows Program manager menu.
- 4 Type a : setup in dialogue box that appears and click on OK.

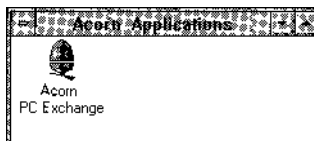


- 5 Follow the on-screen installation instructions, clicking on OK or Continue where necessary.

When you see the following message, remove the floppy disc and click on ContInue:



A new workgroup (Acorn applications) will appear in the Program manager's main window:





## Starting the Acorn PC Exchange software

You need to run applications in both Windows and RISC OS environments in order for Acorn PC Exchange to work.

### Starting the Windows software 1

Run PCx86 and start Windows.



2 Double-click on Acorn PC Exchange (in the Acorn Applications workgroup) to run it. Its icon will appear on the Windows backdrop.

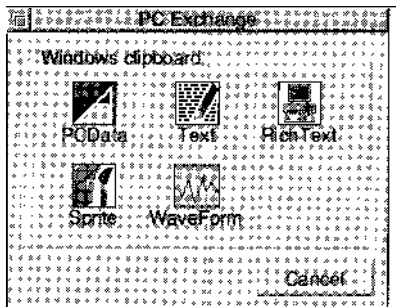
**Note:** You need to run this application each time you start Windows and want to use Acorn PC Exchange. If you copy Acorn PC Exchange into the Startup work group in the Program manager, it will run automatically each time you start Windows.

### Starting the RISC OS software



1 Double-click on PCEX's icon to load it onto the icon bar:

2 Click on PCEX's icon bar icon to show the PC Exchange window.



Icons that are highlighted in the PC Exchange window show what is currently available on the Windows clipboard. You can transfer data on the Windows clipboard into either environment.

Here's a quick overview of how you use PCEX:

1 Select the data you want to transfer (e.g. a Windows WAV sound file, or a RISC OS sprite file). The next section tells you which types of data PCEX can handle.






- 2 Copy your selection to the PC Exchange window — see page 6.
- 3 Transfer the data to Windows or RHSC OS — see page 6.

## What types of data can Acorn PC Exchange handle?

Acorn PC Exchange is designed to handle certain types of file intelligently, and can convert them automatically, if necessary, so that they're understood by both RISC OS and Windows.

The following table shows you which file types are understood by Acorn PC Exchange. The first two columns show which file types are converted automatically. The righthand column shows you which icons will be highlighted in the PC Exchange window when there's data of a particular type available on the Windows clipboard.

**Note:** You can transfer many types of file, although if Acorn PC Exchange doesn't recognise one, you can transfer it as raw data.

RISC OS	Windows	PC Exchange window icon
Text	Text	 Text
Sprite	BMP	 Sprite
Waveform	WAV	 WaveForm
Rich text	RTF	 Rich Text
Raw data	Raw	 PCData



Text



Sprite



WaveForm



Rich Text



PCData

See page 7 for  
more details

For example, if you copy a RISC OS sprite to the clipboard, the Sprite icon will be highlighted in the PC Exchange window. It will be converted automatically to Windows bitmap graphic (.BMP) format if you paste it into a Windows application.

*More about the PC Exchange window* on page 7 tells you what the different icons in the PC Exchange window mean.

## Copying data onto the Windows clipboard

This section tells you how to make your chosen file or selection available on the Windows clipboard.

### Copying from RISC OS

You can use the following methods to make RISC OS data available on the Windows clipboard:

- **Drag and drop** — Simply drag and drop a RISC OS file icon from a directory display onto the PC Exchange window (or select an icon, press Menu then drag and drop the **Copy as** icon onto the PC Exchange window).
- **Save or Save selection** — Select your multimedia resource (this could be a text selection or picture in an application window), press Menu and drag and drop a RISC OS **Save as** icon onto the PC Exchange window.

**Note:** If you drag a *selection* of icons from a RISC OS directory display, you'll see an error message. If you drag a file whose type is not understood by Acorn PC Exchange, it will be placed on the clipboard as raw data (see *More about the PC Exchange window*).

### Copying from Windows

Use the Windows menu system to **Cut** or **Copy** your chosen file or selection to the Windows clipboard (this works with Windows 3.1 and 3.11). Your selection will be made available as one or more icons in the PC Exchange window.

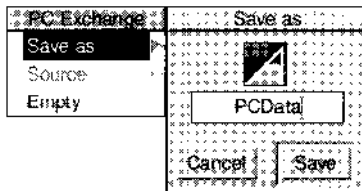
## Using Windows clipboard data

Data in the PC Exchange window is available for you to use in both the RISC OS and Windows environments.

## Pasting into RISC OS

Use one of the following methods to transfer the data:

- **Drag and drop** - Simply drag and drop a file icon from the PC Exchange window onto the RISC OS application window.
- **Save** - Press Menu over one of the available icons in the PC Exchange window, then drag and drop the **Save as** icon onto a RISC OS application.



## Pasting into a RISC OS directory display

If you want, you can use the above methods to copy data from the clipboard into a RISC OS directory display instead of an application window. The resulting file will have the same name as that in the PC Exchange window (if you want to copy the object using a different name from that shown in the PC Exchange window, use the second method above and alter the name in the Save as box).

## Pasting into Windows

Use the Windows menu system to **Paste** data from the clipboard into a Windows application (this works with Windows 3.1 and 3.11).

## Emptying the Windows clipboard

To delete the contents of the Windows clipboard, press Menu over the PC Exchange window and choose **Empty**.

## More about the PC Exchange window

This section explains how the different icons in the PC Exchange window relate to data held on the Windows clipboard.



**PCData** – This icon gives you access to any of the raw data which is on the Windows clipboard (there's more on this in the next section).



**Text**–This icon gives you access to WINDOWS CF\_TEXT data which is converted to RISC OS text by changing CR-LF combinations into a single LF.



RichText

**RichText**– This icon gives you access to rich text and is simply a file type assignment (the data isn't changed).



Sprite

**Sprite** – This icon gives you access to WINDOWS CF\_DIB and CF\_BITMAP data which is converted to RISC OS sprite data.



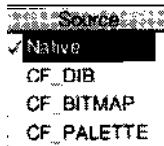
WaveForm

**Waveform** – This icon gives you access to WINDOWS WAV data held in Native, WINDOWS CF\_RIFF or CF\_WAVE formats. This is also a simple file type assignment (the data isn't changed).

## Accessing other Windows clipboard formats

When you place data from a Windows application on the clipboard, it is often available in more than one form for you to transfer:

For example, if you copy text from Word onto the clipboard, the PCData, Text and RichText icons might be available in the PC Exchange window. However, there are also 'hidden' items on the clipboard. You won't normally need to worry about these, but you can see everything that's currently available on the clipboard by pressing Menu over the PCData icon and looking at the **Source** submenu:



The ticked item at the top of the **Source** menu is the one that will be transferred by default if you paste data using the PCData icon. To save clipboard data in one of the other formats, proceed as follows:

- 1 Press Menu over the PCData icon and click Adjust on a data type from the **PC Exchange/Source** submenu.
- 2 Drag the **PC Exchange/Save as** icon to a RISC OS directory display or application window.

**Note:** The Source menu item is only available for PCData, and is greyed out for other icons.

Formats registered by other Windows applications will also appear on the **Source** submenu (e.g. CF\_FILENAME, Rich Text Format) so it's not possible to supply a definitive list here. However, here are some of the currently-accessible formats:

Native	Can be any form of data.
CF_TEXT	Array of text characters. Each line ends with a CR-LF. A null character signals the end of the data.
CF_BITMAP	A Windows bitmap.
CF_DIB	Device Independent Bitmap.
CF_PALETTE	A colour palette.
CF_OEMTEXT	As CF_TEXT but with OEM character set.
CF_RIFF	Resource Interchange File Format.
CF_WAVE	Sound wave (subset of CF_RIFF).

## Release note information

Please read the information in the file called ReINote in the root directory of Software disc 1. It contains

- a list of known problems with the Acorn PC Exchange software
- a list of known problems with Windows (3.1/3.11) which could be misconstrued as being problems with Acorn PC Exchange.



# Reader's Comment Form

Acorn PCEXchange *User Guide*  
(1407,120 Issue 1)

We would greatly appreciate your comments about this Manual, which will be taken into account for the next issue:

---

**Did you find the information you wanted?**

---

**Do you like the way the information is presented?**

---

**General comments:**

If there is not enough room for your comments, please continue overleaf

How would you classify your experience with computers? **First-time**

**user**

**Experienced User**

**Used computers before**

**Programmer**

*Cut out (or photocopy) and post to:*  
Dept RC, Technical Publications  
Acorn Computers Limited  
Acorn House, Vision Park  
Histon, Cambridge CB4 4AE  
England

**Your name and address:**

This information will only be used to get in touch with you in case we wish to explore your comments further



