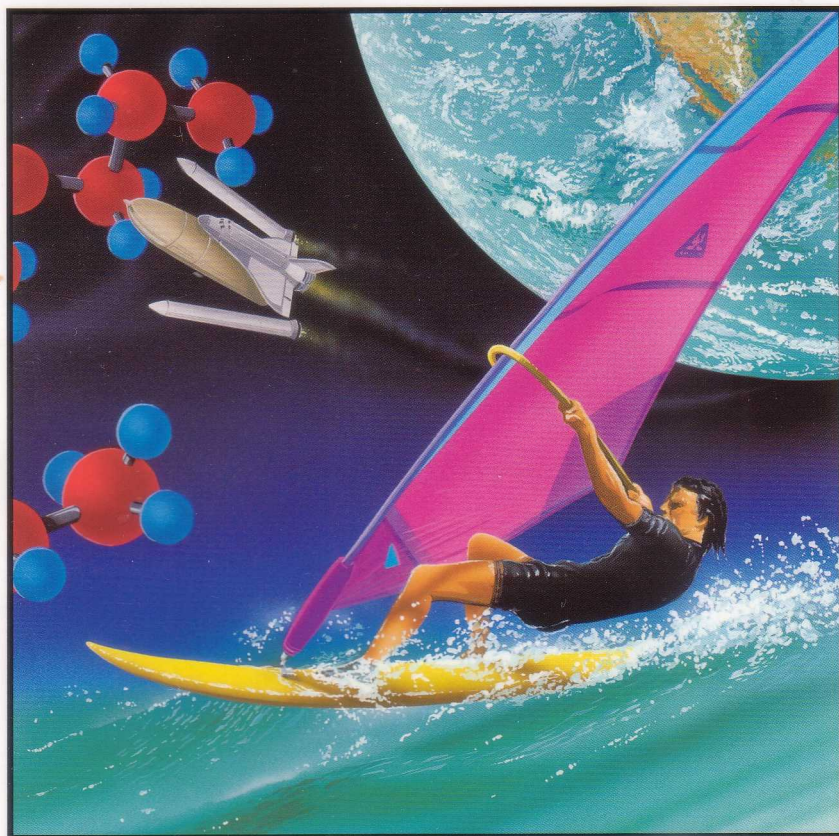


PhotoQV Application Guide



Acorn PhotoQV Application

Introduction

PhotoQV is a simple yet powerful application which allows you to access and manipulate the images on a Casio QV series digital camera. Using PhotoQV to view and manipulate an image you can:

- rotate the image through 0°, 90°, 180° and 270°
- flip the image in the vertical plane prior to rotation
- save the image in a choice of image formats
- store images in albums for later display

Packing List

The product consists of:

- this Application Guide
- a 3 1/2" Double Density (800KByte) disc
- a serial cable to connect the camera to the computer
- Owner Registration Card

Computer System Requirements

A computer with RISC OS 3.1 or later. A minimum of 2MBytes of memory, though 4MBytes (or more) is recommended.

If you are using an older machine, such as a A440, you must obtain an 'Archimedes' to IBM-PC serial cable conversion lead - consult your dealer.

Connecting the QV digital camera to your computer

Use the cable that comes with this software to connect the Casio QV series digital camera to your Acorn computer. Whenever making connections, be sure to turn off the camera, your computer and all peripheral equipment connected to the computer.

One end of the cable connects to the Serial port on the back of the computer, the other end to the DIGITAL terminal on the camera. See the camera OWNERS MANUAL for details on how to open the Terminal Panel Cover.

Important

Make sure that the cable is securely connected. Data will be corrupted during transfer if the cable connection becomes loose or is broken.

Never unplug the cable while PhotoQV is in use. Doing so will not only cause problems with the operation of the application, it will also corrupt data and can even result in damage to the camera or your computer.

Installing PhotoQV on your hard disc

To install PhotoQV on your hard disc:

1. Create a new directory called PhotoQV on your hard disc, and open it by double-clicking on it.
2. Place the PhotoQV Application disc in your floppy disc drive.
3. Click on the floppy disc drive icon on the icon bar to display the root directory of the PhotoQV Application disc disc.
4. Drag the PhotoQV icon into the PhotoQV directory on your hard disc.
5. Update your copy of !Boot or !System by following the instructions in the file Install that you will find on the disk.
6. Remove the floppy disc from the drive.

You can now run PhotoQV from your hard disc.

Starting PhotoQV

To run PhotoQV from your hard disc, double-click on the PhotoQV icon in your hard disc PhotoQV directory. This will cause the PhotoQV icon to appear on the

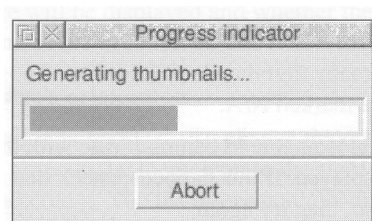
icon bar as follows:



Loading the contact sheet

The contact sheet is a PhotoQV directory display which contains a number of thumbnail images. A thumbnail is a small representation of an image. There is one thumbnail for each image stored in the Casio QV camera. Thumbnails are numbered in order corresponding to the number of the stored image in the QV camera.

To open the contact sheet, click on the PhotoQV icon on the icon bar. This will display a progress window whilst the thumbnail images are generated:



When all the thumbnail images have been down loaded, the contact sheet for the QV camera to be opened on the desktop as follows:

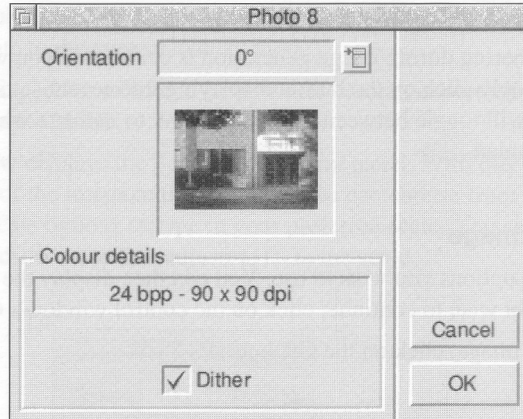


If you are loading the contact sheet and do not have sufficient free memory, PhotoQV will display as many thumbnails as it is able. Those images which could not be displayed are marked N/A.

If the PhotoQV application is unable to communicate with the camera for any reason, an error box is displayed. If this happens, check that the camera is connected and switched on, then try again.

Loading an image

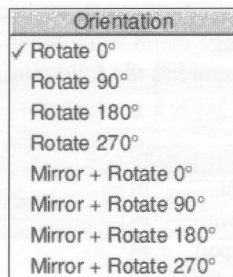
Choose the image you wish to load by double clicking on its thumbnail. This opens a control window containing the same thumbnail:



You may use the control window to choose image display settings prior to displaying the image itself. Within the control window you can set the orientation in which the image will be displayed and whether the image should be dithered.

Changing the image's orientation

By default, orientation is set to 0°. To change the orientation at which the image will be displayed, click on the menu icon to the right of the box containing the current orientation setting. The list of orientations displayed includes four options with which you can flip the image in the vertical plane prior to rotation. Choose the new orientation from this list:



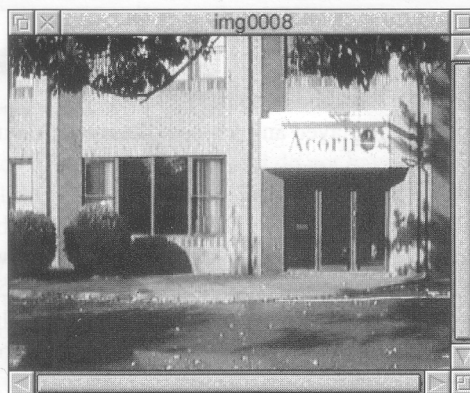
Enabling and disabling dithering

By default, dithering during image generation is enabled. If you wish to change this setting, simply click on the button displaying the current setting. The legend on this button will toggle between a tick and blank to indicate whether dithering is enabled or disabled.

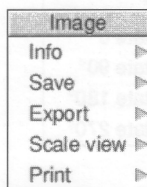
Displaying the image

Set the display options you wish to use. You can then display the image. If at this point you do not wish to continue, click on the control window's Cancel button.

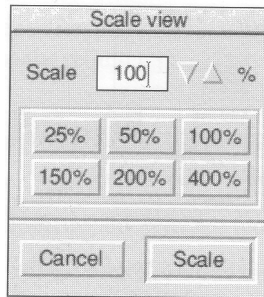
To display the image, click on the OK button:



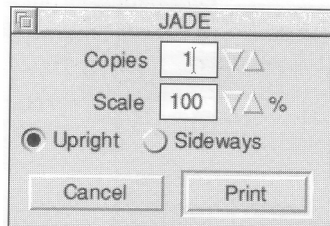
Once you have displayed the image, further options become available via the **Image** menu. To display the **Image** menu, click Menu anywhere within the displayed image window. The menu has the following options:



- **Save** displays a Save box which allows you to save the image as a sprite file appropriate to the current display mode.
- **Export** displays a submenu, from which you can export the image as either a JPEG or a CAM file.
- **Scale view** displays the Scale view control panel. With this you can specify the scale of the image in the window. You can choose from the six predefined scale options or type in your preferred scale. You can click on the arrowheads to make fine adjustments to the scale.



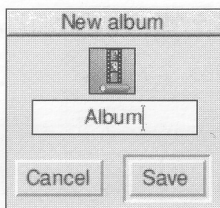
- **Print** displays the Print control panel. You can choose the number of copies to be printed, as well as a scale factor for the image. The image is printed in the centre of the page and can be printed upright or on its side. For greater control of the image position, save it either as a sprite or JPEG file, drop that into Draw, reposition the image and then print it from Draw.



Album files

You may store collections of images in album files. These may be viewed as thumbnails on a contact sheet and as full size images in exactly the same way as the images held in the camera. You can copy images from the camera to an album, from an album to the camera, or between albums by dragging thumbnail images from one contact sheet to another.

To create a new album, click-menu on the PhotoQV icon on the icon bar and select **New album**, which displays the New album box:



Enter the name you wish your album to have, then drag the album file picture to a directory viewer. A new empty album will be created and a contact sheet for it displayed.

You can now select thumbnails on the camera contact sheet and drag them over to the contact sheet for the newly created album. The images are then copied from the camera into the album file.

You may also create a new album using the **Save** entry on the contact sheet menu:



This creates an album and copies to it some or all of the images shown by the contact sheet. The normal action is to copy them all, but, you may select just a

few of them by clicking select and adjust on the thumbnails then choosing the Selection button on the Save album box.

Previously created album files may be opened by double-clicking on them, or by dragging them onto the PhotoQV icon on the icon bar. You can then select some or all of the images and drag them to the camera contact sheet to copy them back into the camera.

Miscellaneous features

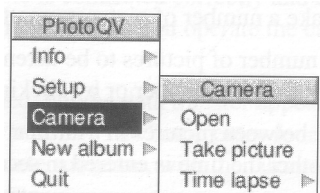
Re-ordering images

To change the order of images within the camera, select the thumbnail of the image and drag it to the required place.

The **Select** submenu found on the the contact sheet menu contains entries such as

- **Select all** which selects all the thumbnails on the contact sheet
- **Clear** which deselects any selected thumbnails
- **Delete** which deletes selected images from the camera or album file
- **Protect** to mark the selected images to prevent accidental deletion
- **Unprotect** to remove protection from the selected images, allowing them to be deleted.

The **Camera** submenu found on the PhotoQV icon bar menu has the following entries:



- **Open** This entry opens the camera and displays its contact sheet. This is equivalent to clicking on the PhotoQV icon on the icon bar.
- **Take picture** This tells the camera to take one picture. Its thumbnail will appear automatically on the contact sheet when the camera has finished

storing the picture.

Please make sure that the camera is switched on, and set to record mode before taking pictures this way.

- **Time lapse photography** This displays the following control panel:

The screenshot shows a window titled "Time lapse photography". At the top, there is a text field containing "15" followed by the text "unused pictures". Below this is a section with a "Take" label, a text field containing "10", and two small triangle buttons (up and down) to its right, followed by the text "pictures". Underneath are three buttons labeled "5", "10", and "All". The next section has a "One every" label, a text field containing "25", and two small triangle buttons to its right. To the right of these are four radio buttons labeled "Seconds", "Minutes", and "Hours". Below the "One every" section are two rows of buttons: the first row has "5", "10", and "15"; the second row has "30", "45", and "60". At the bottom of the panel are two checkboxes: "Delay first picture" (unchecked) and "Show status" (checked). Finally, there are two buttons at the very bottom: "Cancel" and "Start".

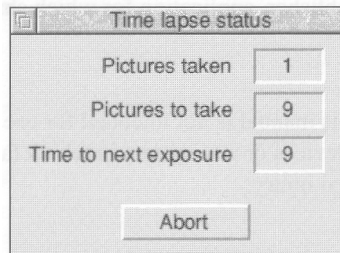
This allows you to take a number of pictures, unattended, at regular intervals. You can choose the number of pictures to be taken by pressing one of the three presets or by typing in a number or by clicking on the arrowheads.

You can set the time between pictures in a similar way, using the radio buttons to choose whether the time is entered in seconds minutes or hours.

The first picture will be taken when you press Start, but this can be delayed (by the 'between picture' time) if the Delay first picture button is pressed. Press Cancel if you do not wish to proceed with the time lapse sequence.

When Start is pressed, the camera's contact sheet window is closed and replaced by the Time lapse status window. This shows you how many

pictures have been taken, how many are still to be taken and the number of seconds to the next exposure. You may stop the sequence at any time by pressing the Abort button in the window.



Please make sure that the camera is switched on, and set to record mode before taking pictures this way. It is strongly recommended that you operate the camera from the mains adaptor.

Quitting PhotoQV

To quit PhotoQV, press Menu over the PhotoQV icon on the icon, bar and choose **Quit**.

Troubleshooting

If you encounter trouble downloading the contact sheet from the camera, first check that the serial cable is connected correctly and that the camera is switched on. It is strongly recommended that you operate the camera from its mains adaptor.

If images are downloaded, but the data transfer appears unreliable, try setting a lower Baud rate for the transfer. The Setup entry found on the PhotoQV icon bar menu displays a **Baud rate** submenu, with the current setting ticked. Try selecting a lower baud rate.

Copyright © Acorn Computers Limited 1996

No part of this publication may be reproduced or transmitted, in any form or by any means, electronic, mechanical, photocopying, recording or otherwise, or stored in any retrieval system of any nature, without the written permission of the copyright holder and the publisher, application for which shall be made to the publisher.

The product described in this manual is not intended for use as a critical component in life support devices or any system in which failure could be expected to result in personal injury.

The product described in this manual is subject to continuous development and improvement. All information of a technical nature and particulars of the product and its use (including the information and particulars in this manual) are given by Acorn Computers Limited in good faith. However, Acorn Computers Limited cannot accept any liability for any loss or damage arising from the use of any information or particulars in this manual.

Acorn supplies its products through an international distribution network. Your supplier is available to help resolve any queries you might have.

PhotoQV, like many Acorn products, is continuously improved. If you wish to receive details of updates which may be available, email either edu.support@xemplar.co.uk or prodsupport@art.acorn.co.uk depending on whether you are an educational or other user.

ACORN, the ACORN logo, and ARCHIMEDES are trademarks of Acorn Computers Limited.

Casio, QV10 and QV100 are registered trademarks

Published by Acorn Computers Limited

Part number 1419,055

Issue 1, October, 1996

