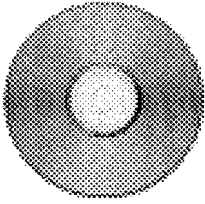
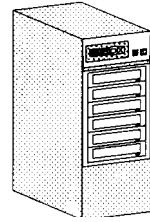


Product List
5th January 1996

Eesox, Suite 8C, Newton House, 147 St. Neots Rd, Hardwick, Cambs CB3 7QJ
Tel: (01954) 212263, email eesox@cityscape.co.uk



CD-ROM Drives



CD-ROM Drives

We sell three types of CD-ROM drive: SCSI, IDE and Parallel port. The SCSI drives need a SCSI card with CDFS on. The IDE drives can plug straight into a RISC PC with the cable we supply. Parallel port drives plug straight into the A4, A3010/20, A4000, A5000, A7000 and RISC PCs.

Description
IDE, Gold (quad speed) and Platinum (six speed)
Parallel, Bronze (double speed), Bronze Elite (quad speed)
SCSI, Gold caddy loading (quad), Gold tray loading (quad)
SCSI, Platinum caddy (6 speed)
SCSI, Platinum tray (6.7 speed)
SCSI, Silver External (double speed)
SCSI, Silver External +card +cable
SCSI Drive in external case
Soft carry case for CD-ROM drive

CDBrick

This is our latest low cost/ultrafast multi CD-ROM system aimed at network servers. Please ask for details.

CD-ROM Towers - (6 16.00 postage) :

Up to 6 CD-ROM drives of any speed can be placed in one of the Eesox towers.

CD-ROM Utilities

CDFast

is designed to speed up programs running on CD-ROM.

NetCDFast

is a version of CDFast designed for networks. The algorithms are completely different to deal with a multi-user environment. NetCDFast is placed on the server. No memory is used up on the clients.

CDSimulator

is for CD-ROM developers who wish to try their application out as if it were on a CD-ROM, without having the expense of actually producing one.

Product List



Audio Products



The Audio Mixer Board

This allows CD audio to be mixed with computer audio so that both can be played through the one set of speakers. Compatible with the Acorn/ESP 16bit sound card.

Active Speakers

We carry three different types of active speakers. All are of good quality, German design. They come with their own power supply and cables for connecting to a headphone socket such as on a CD-ROM drive, Walkman or computer. If you buy a CD-ROM drive at the same time we will take **£5** off the speakers !

16 bit sound card for RISC PCs

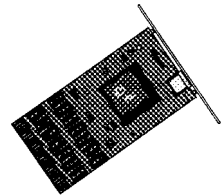
We sell the ESP/Acorn 16 bit sound card to give the RISC PC high quality audio.

DAT Products

Digital Audio Tape for professional quality productions.



Storage Devices and Cards



The Eesox PD System

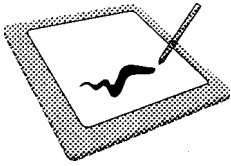
This is a combined quad-speed CD-ROM drive and 650MB cartridge system.

Internal Hard Discs

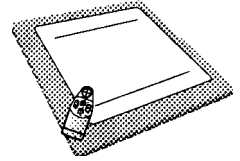
These hard discs are supplied with an internal cable only.

External Hard Discs

These hard discs have been placed in a case with a power supply, and are suitable for standing next to a computer, such as an A3000/A4000/A5000. A cable for connection to a SCSI card is available as an extra.



Graphics Tablets



Pressure Sensitive Graphics Tablets

We cover a range of pressure-sensitive tablets, from the ArtPad (at slightly smaller than A6) to the A2. Larger sizes, electrostatic and backlit tablets are also available. All of these tablets are supplied with a cordless stylus, tablet software and a pressure tool for Artworks (worth £39). The A4 and larger tablets also have a 'puck' supplied with them, useful for translating paper diagrams into computer form. The stylus or puck can be used instead or with a mouse and works with all applications, from Studio24 to Lemmings !. The tablet plugs into the serial port. A3000s, A300s and A400s may require a serial upgrade.

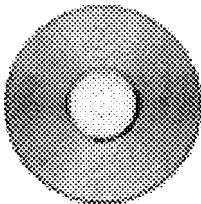
Software

Studio 24 graphics package

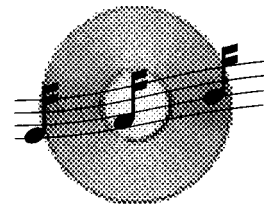
Non-Pressure Sensitive Graphics Tablets

The College Board/Digital tablet resembles a conventional A3 drawing board. A mouse is plugged into the serial port and can be placed on the drawing board for accurate tracing of diagrams, or used without the board it can be used as a conventional mouse.

Description
College Board/Digital



The CD Writing Service



Our service can produce audio CDs, CD-ROMs, or mixed audio and data discs. These discs are one-offs and do not require an expensive glass master. We offer a fast turn-around and secure delivery.

Product List