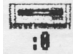


Acorn Printer Driver Installation

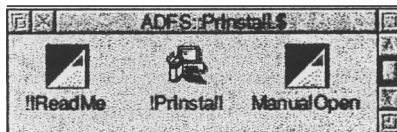
Introduction

The printer driver installer program on the PrInstall disc is intended to help people with little knowledge of Acorn computers to install the printer manager and appropriate printer definition file for the type of printer being used. It will normally make this task very simple but it is not intended for use with non-standard hard disc, or network configurations. Users with non-standard configurations should follow the manual procedures appearing later in this brochure.

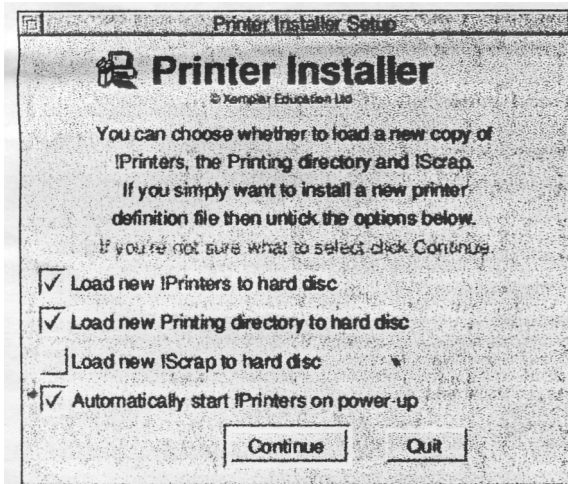
Running the Installer program

Insert the disc and click on the floppy disc icon  to open a Filer window

Double click on the !PrInstall program



The program will run and display this window



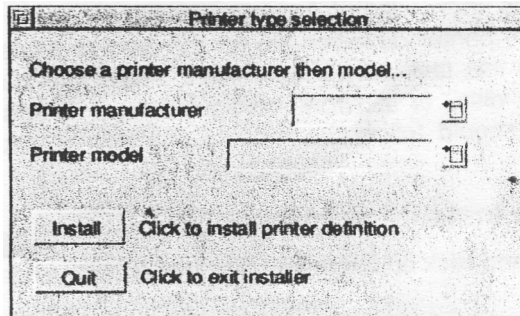
If you want to install a new copy of !Printers version 1.53 then tick that option. You do *not* need this if you have a Risc PC, A7000 or A7000+ with RISC OS 3.7 as version 1.54 is in the ROM. In that case the option will not be ticked.

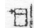
The program will automatically suggest the most appropriate options but you can override them if you wish.


Click **Continue** or press **Return** when you are ready to proceed.

Any existing versions of !Printers, !Boot files and Choices.Printers will be moved to a WasteBasket folder on the hard disc in case you ever want to retrieve them. The WasteBasket folder can be deleted later.

Next, the files will be copied from the floppy disc to the hard disc as necessary and then this window will open



Select a printer manufacturer by clicking on the menu button 

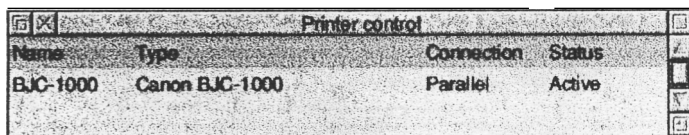
If there are any relevant ReadMe files they will be opened for you to read. Close them when you have read them (click the  icon) and click OK on the information window when ready.

Now select a printer model in the same way. Again any relevant ReadMe files will be opened. Close them when read and click **OK** in the information window.

Some printer names may appear in duplicate (for example BJC-1000.BJC-1000). This is because the definition file is contained within a folder of the same name and this not a problem.

When the manufacturer and model have been selected click **Install**.

The printer manager will be started and the required definition file loaded. The Printer Control window will be opened



If you wish you can change the configuration of the printer by clicking the middle mouse button over the printer name and selecting **Configure...** Click **OK** in the information window when you have finished making changes.

The printer manager choices will then be saved automatically and if you chose to have !Printers starting up when the computer is started then the appropriate commands will be entered into the !Boot file. If there is no !Boot file it will be created.

That's it! All that remains is to click **Quit** to stop the installer.

What the Installer program will work with

The installer is not intended to work with all configurations as there are so many possibilities due to the flexibility of RISC OS and individual preferences.

It will work with the following configurations:

- RISC OS 3.1, 3.11, 3.12, 3.5, 3.6, 3.70, 3.71
- A5000, A3010 with hard disc, A3020, A4000, A4, all Risc PCs (inc StrongARM), A7000, A7000+
- Hard discs defined as Drive 4 (ADFS, IDEFS, SCSI)
- Standard !Boot applications (where the !Boot file is inside !Boot.Choices.Boot.Tasks directory and the printer choices are in !Boot.Choices.Printers). Such !Boot applications may be the ones supplied on the hard disc with the computer or those installed later (such as Acorn's universal boot application).
- !Boot files in the top directory of the hard disc (as used on pre-Risc PC computers running RISC OS 3.1).

It will *not* work with the following configurations:

- RISC OS 2, Arthur
- A3000, A310, A420, A440, A540 systems with 800K floppy drives.
- Systems without a hard disc (eg. non-upgraded A3010 or those relying on a network server)
- Systems which do not boot from Drive 4, or which have non-standard or non-disc-based filing systems.
- Systems with locked hard drives.
- Systems with modified !Boot applications or files that are substantially customized or different from those supplied by Acorn.
- Network servers (RISC OS or Windows NT)

In these cases manual installation will be necessary, and in the case of systems with only 800K floppy drives the printer drivers will need to be transferred using a system which can read HD floppy discs.

Manual installation

It is recommended that manual installation be performed by someone who is familiar with Acorn 32 bit computers and with your particular configuration.

The printer manager, utilities and definition files are compressed in Cfs format inside the PrlInstall application in the Printers directory. To open this you can double click on the obey file **ManualOpen**, which runs the CfsReader application and opens the directory. The various printer driver components can then be copied to the desired destination and the definition files loaded in the usual way.

The printer definition files are not Cfs compressed but Squashed.

If you encounter problems

Should you have any difficulty following the installation procedures contained in this leaflet, or if the installation does not complete properly you can ring the Apple Xemplar Education Ltd. Tesco Computers for Schools help line on **01223-724208** for assistance.
