

- FAXPACK PLUS
- COLOURCARD UPDATE
- ARTWORKS 1.1
- PUBLISHING PACK



BUMPER ISSUE

Art
WORKS

Clip Art

COMPETITION



Computer Concepts Ltd

DON'T FORGET!
ACORN USER SHOW
15-17TH APRIL
STANDS 33/39



HINTS & TIPS

Product Guide

Impression II

Used by tens of thousands of users as their day-to-day word processor, but also capable of professional quality desk-top publishing applications (eg this magazine and Acorn User). 2Mbytes RAM recommended.

£169 + VAT (£198.57 inc)

Impression Junior

Entry level version of Impression. Lacking some of the advanced capabilities of Impression II (so it is less well suited for very long documents). The ideal starter word processor and DTP package. Upgrade to full Impression II available.

£89.95 + VAT (£105.69 inc)

Impression Business supplement

A set of extensions for Impression II, providing mail merge, file import filters for a variety of other word processors and colour separation facilities.

£49 + VAT (£57.57 inc)

Impression II border disc

100 new frame border designs.

£12.77 + VAT (£15.00 inc)

Compression

Very fast automatic general purpose file compressing utility. On average this can double the amount of data that can be stored on your disc. Acts like a filing system so is compatible with all applications.

£39 + VAT (£45.82 inc)

ArtWorks

The most powerful and flexible graphics illustration program for the Archimedes. Package includes 220 outline fonts. 2Mbytes RAM minimum recommended. Files can be easily loaded into Impression for superb illustrated documents.

£169 + VAT (£198.57 inc)

TurboDrivers

The fastest printer driver software available for the Archimedes. Suitable for Canon BJ10, BJ300, BJ330, and BJ200 inkjet printers. Includes printer cable.

£49 + VAT (£57.57 inc)

Colour TurboDrivers

24-bit colour printer drivers for the Canon BJC-800 full colour inkjet printer. Includes printer cable. 4Mbytes RAM minimum.

£99 + VAT (£116.32 inc)

ColourCard

Graphics accelerator expansion card. Provides much higher resolution, more colours, less flicker (higher refresh rates) and faster graphics drawing. 32,000 colour screen modes and video pass-through for Acorn modes.

£249 + £6 p&p + VAT (£299.62 inc)

FaxPack

This internal expansion card combines Fax sending and receiving, computer to computer data file transfer, and answering machine capabilities. All operations happen entirely in the background.

£299 + £10 p&p + VAT (£363.07 inc)

ScanLight 256

Hand-held scanner capable of scanning 256 grey-levels for photographic quality image capture. The best way to get pictures into your computer. Requires internal expansion card (included). Versions available for all Acorn computers - so please specify model of computer when ordering.

£199 + VAT (£233.82 inc)

ScanLight A4

A4 width monochrome scanner - from 100 to 400 dpi scanning resolutions. Optional sheet-feeder available.

£299 + VAT (£351.32 inc)

ScanLight Professional

Flatbed A4 256 grey-level scanner. Requires SCSI interface card (available as optional extra).

£595 + £10 p&p + VAT (£710.87 inc)

LaserDirect HiRes8

8 page per minute, 600 dpi, laser printer. Direct drive from the Archimedes for the fastest printing speeds of any Archimedes laser printer. 2Mbytes RAM minimum, 4Mbytes recommended.

£1495 + £15 p&p + VAT (£1774.25 inc)

Equasor

Mathematical equation creation and editing tool, able to create Draw files suitable for use in Impression and many other applications.

£49 + VAT (£57.57 inc)

LaserDirect HiRes4

Package includes 4 page per minute, 600 dpi laser printer with interface board and software. (Note: For existing owners of a standard Canon LBP-4 printer the Interface board and software are available separately - please ask for details.)

£999 + £10 p&p + VAT (£1185.57 inc)

Canon BJC-800 colour printer

A3, 360 dpi, full colour printer combined with TurboDriver software. 4Mbytes RAM min recommended.

£1599 + £10 p&p + VAT (1890.57 inc)

Canon BJ-200 mono printer

Fast, 360 dpi, inkjet printer. Includes TurboDriver software to provide the fastest inkjet printing of any printer in its class. Printer has built-in sheet feeder and power-supply. Includes printer cable.

£299 + £10 p&p + VAT (£363.07 inc)

AvantG Font disc

Contains four font styles (normal, italic, bold, bold-italic).

£20 + VAT (£23.50 inc)

BookM font disc

Contains four font styles (normal, italic, bold, bold-italic).

£20 + VAT (£23.50 inc)

Wild Vision

Hawk V9 MkII digitiser

Real-time colour digitiser. Capture colour images from any video source.

£269 + £6 p&p + VAT (£323.12 inc)

E&OE. Prices and descriptions are subject to change without prior notice.

Advance

Advance is a new integrated package from Acorn, combining a word processor, spreadsheet, database and graph drawing facility. This package is similar in concept to Claris Works or Microsoft Works which are popular in Macintosh and PC markets. Rather uniquely Advance has been created by three of the leading software houses for the Archimedes. Acorn realised that no single software house was likely to be able to produce the really good integrated package, and so it arranged and organised for Clares (spreadsheet), Iota (database and graph drawing) and ourselves (word processor) to get together and create a low cost integrated package. The result is Advance which has an RRP of just £99 + VAT. Educational site licences are available.

The development brought quite a few aspects of software integration to light. While each of the software houses produced a separate program it was clear from the beginning that this package should behave as one integrated package and not three distinct and dissimilar programs. As a result we have all moved forward the state of the art of integrating Archimedes packages. Along with Acorn we have produced a new set of guidelines on the look and feel of programs. This ensures that each of the packages uses the same terminology,

and has a totally consistent menu structure across all the parts and uses common dialogues for printing and other fundamental actions. This development also introduced the concept of a single global clipboard so that you can cut, copy and paste data directly between the separate parts without the need to use file transfers.

The word processing part is based on Impression Junior, but with emphasis on the word processing rather than the DTP facilities. In fact some aspects of the Advance word processor are better than Impression Junior or Impression II! For example, it saves documents as a single file, has bold and italic effects that correctly embolden or italicise fonts, and has a better mail merge capability.

So while it may have seemed that Impression did not progress a great deal over 1992, in fact quite a lot of development has gone on behind the scenes in the form of Advance. The benefits and features that have been developed will appear in upgraded versions of Junior and Impression II later this year. More details in a later Archimedean.

Advance is not available directly from Computer Concepts, but is available from Acorn and from dealers. It looks set to become the standard general purpose package on the Archimedes very quickly indeed and will no doubt prove particularly popular in the Education market.

ScanLight 256 Delays

We have been out of stock of this product for about a month recently. There was a mix up with our suppliers (added to the fact that we seem to be selling more of the scanners than ever, so we ran out rather earlier than we had anticipated). By the time you read this Scanlight 256 will be back in stock and should be available from ourselves or any of our dealers.

Training

For those of you who don't have time to learn from manuals and prefer the personal touch, third-party training is an ideal way to become proficient with software. An increasing number of companies are offering training so it's worth asking your regular dealer what's on offer.

In particular we know of two companies with special training facilities offering courses at both introductory and advanced levels covering Impression, and now Artworks as well: Acorn and Minerva. They can be contacted at the addresses shown if you would like to know more about the courses on offer and the planned schedules.

Minerva Training, Minerva House,
Baring Crescent, Exeter.
Tel: 0392 426160
Fax: 0392 421672

The Training Administrator,
Acorn Computers,
645 Newmarket Road, Cambridge.
CB5 8PB.

Thesaurus on the way...

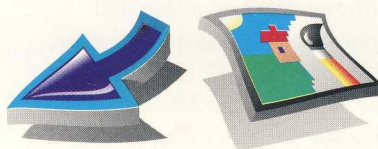
We are very close now to releasing a Thesaurus package which will integrate with Impression. Some of the facilities have yet to be finalised, so full details will follow in the next Archimedean. In the meantime, if you are interested in receiving details please contact us and we will send details as soon as they are available.



Artworks Competition

The ArtWorks clip art competition is nearing its closing date of the end of April. Remember the prize is one of our top colour printers worth nearly £1800. There are runner-up prizes and in fact all entrants will get a £10 discount voucher, so you can't lose. As far as types of clip-art are concerned we are interested in all sorts. Clip-art that is functionally useful, technical drawings, illustrative or purely artistic examples. And you don't have

better than a detailed and complicated drawing, like these two examples in our existing collection.



So if you have any examples of work produced in ArtWorks, or are producing something now then just send it to us with a completed copy of the entry form below.

to be an artistic type - often a simple, but imaginative, drawing can look

Artworks Competition Entry Form

Name:

Address:

.....

.....

.....

Competition rules and conditions:

- 1 Entry is free.
- 2 You must sign and date this form.
- 3 All entries must be on disc in ArtWorks format.
- 4 The closing date is 30th April 1993.
- 5 All entries must be your original work.
- 6 You assign to Computer Concepts the right to use any or all of your entries in any way that Computer Concepts sees fit.



Please sign this declaration and return it with your entry:

The entries submitted are my own original work and I agree to Computer Concepts using them as they see fit.

Signed:

Dated: 1993

Return this form and your disc to:

ArtWorks Competition, Computer Concepts Ltd.,
Gaddesden Place, Hemel Hempstead, Herts, HP2 6EX

Please write your name and address on each disc you send us.

The Best Offer in Site

Although we have offered site licences for our software products for many years now, some users are new to the system and have asked us to explain how they work and when they are the best option.

Site licences were originally designed with schools in mind, but they work equally well for any organisation that has several machines at one site. The exact number at which a site licence becomes economical varies with the product, but if your site has more than three machines then it's worth investigating further.

Impression and ArtWorks are the most popular licences and they come in two forms - for use on a network or for use with stand-alone machines. The pricing can be summarised as:-

Impression stand alone: £550
(+ £15 per machine for each dongle)

Impression network: £660
(no dongle required)

ArtWorks stand alone: £550
(+ £15 per machine for each dongle)

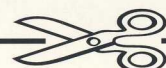
ArtWorks network: £660
(no dongle required)

Impression Junior: £440
(no network required)

The licence fee includes one complete package, including manuals and a dongle where necessary. The purchase price of a single copy, if one is already owned, can be offset against the fee.

One further factor to bear in mind is the maximum number of machines you might eventually have on the site. The licence covers up to 20 machines, but for the larger sites additional units of 10 can be bought at a later date. Network licenses now run over Econet, Ethernet or Nexus.

Think of it this way; if your site has 20 machines, an Impression network licence works out at £33 per copy, when the RRP is £169. We're sure you'll agree that this pricing is attractive, which is why 3000+ sites have Computer Concepts licences !



A Computer in your Pocket

The Acorn PocketBook

Acorn have released a special version of the Psion Series 3 hand-held computer, called the Acorn Pocketbook. This is a very neat and very powerful (for its size) little computer and the software that comes with the machine is very good. Acorn's variant of the Series 3 is exactly the same as a standard 256KRAM version except that the built-in application software is slightly different. Acorn have taken out the diary/scheduler application (which is a shame) but have added a powerful spreadsheet. In addition there is a word processor, database, calculator, alarm clock. The RAM is completely non-volatile so that you can switch it off at any time and things will be exactly as you left them when you switch it back on.

The Psion Series 3 doesn't have the spreadsheet as standard - but it can be bought as an upgrade in the form of a plug-in ROM application. I hope Acorn or Psion will make the Diary/Scheduler application available as an upgrade option for PocketBook owners.

The biggest attractions of this machine are its size and weight - it's easily the most portable, lightweight computer you can buy. Unlike many other "organiser" style products, the software that comes with the machine looks and feels like real, serious, desktop computer applications.

Computer Concepts' involvement with the Acorn PocketBook is the software that links it to an Archimedes for file transfer. The computer has a (relatively slow) serial link option (called the PocketLink and sold separately) that allows the PocketBook to be plugged into any Archimedes. Our software then provides a really simple drag-and-drop style method of transferring files from one computer to the other. This allows you to take, for example, word



processor files from the PocketBook and just drop them straight into an Impression document.

Please note that the PocketLink software is sold (*and supported*) as an Acorn product and that we cannot provide any technical support or supply the PocketLink hardware or software in any form. Acorn dealers can, however, supply both the computers and PocketLink software.

I now carry this computer with me all the time and use it as a travell-

ing notebook, word processor, diary and alarm clock. Of course, it has to be stressed that the tiny keyboard means you can't easily type long documents into the computer, but it's absolutely fine for notes. Although I have a perfectly good portable Archimedes A4, it's somehow embarrassing to use a fully-fledged portable in public. I would be absolutely lost now without my PocketBook and wouldn't dream of travelling without it!

SPECIAL OFFER

!Expansion

At last, a new utility that fits the bill when you've just bought a new hard drive and have an embarrassing amount of free space.

Expansion will solve the problem. Based on similar technology to !Compression, !Expansion makes use of the well-known 'LoofLirpa' algorithm to increase the size of most files. In some cases an increase of 10493% can be achieved.

Limited period offer: !Expansion can be purchased for just £29.95 + VAT. Offer ends 2nd April.

FaxPack Plus

FaxPack has recently undergone a major upgrade, adding an answering machine facility and file transfer to the existing fax send and receive capabilities. This makes it the most flexible and attractive product of its type available.

FaxPack is a single-width expansion board, compatible with all 300, 400, 540 and A5000 machines. It plugs into a standard telephone socket and connects internally to the Archimedes sound system.

Fax

In use, FaxPack is treated just like a printer driver - just load it and print from any RISC OS application. However, rather than the output appearing on your desktop printer, it appears at the far end of the telephone line on someone else's fax machine. So sending a fax can be as simple as printing.

FaxPack has the unique ability to detect the destination phone number embedded within the text of the document you're sending, avoiding the need to dial manually.

Of course FaxPack can also receive faxes. While normal fax machines print everything received, on expensive paper, FaxPack allows you to read faxes on the screen. You can print a fax if you decide you need to keep it, but otherwise you can read it and delete it. You can also save any part of a fax as a sprite and include the image into Archimedes applications.

File transfer

FaxPack can now perform file and directory transfer to any other Archimedes fitted with FaxPack. And there's no need to worry about the complexity normally involved in transferring files using conventional modems and communication software. To send a file you simply drag the file onto the FaxPack icon, enter

the phone number of the destination machine, and that's it. FaxPack will then transfer the file, typically at the equivalent of 20Kbps (faster than most conventional modems). The file transfer is fully error checked and corrected to guarantee that the files will be intact at the other end, where they just 'appear' in a directory on the receiving machine.

Answering machine

This is a totally new feature and is a bonus to existing users who can upgrade free of charge. The FaxPack board has the ability to digitally record sound from the telephone line, and then save it on disc. The Archimedes can then play it back through its speaker. The recording takes about 10K of disc space per second - which sounds like a lot but as long as you have a few megabytes spare on your hard disc it will be fine.

The new software can automatically detect the difference between fax, file or voice data when it answers the phone. First it plays an audio 'answering machine' message down the phone line and then listens for a response. If it's a fax or file transfer it proceeds to deal with it as usual. If

it's an audio message it is recorded digitally and stored as an audio data file on the disc. Simply double clicking on the file will replay the audio message through the speaker. The answering machine message is an English voice - not American, and not a computerised 'dalek' voice!

FaxPack performs all file, fax and voice operations in the background, without slowing down the computer, so you can carry on using the computer while it works.

Registered FaxPack users should have received details of the upgrade (available free of charge). If you have not, then please contact us and make sure you return the registration card.

Technical info

For the technically minded a FaxPack technical manual is available for £10 +VAT. This includes details of how to control FaxPack from your own programs. Using this information FaxPack could be extended in numerous ways, eg remote control of machines, remote filing systems, automated data distribution, automated fax distribution, computerised email or voice mail distribution - the possibilities are almost endless.



Artworks 1.1

Artworks now has even more features, and at no extra cost. Read on for details of version 1.1 with free upgrades for registered users.

Upgrades to Artworks version 1.1 are supplied free of charge to registered ArtWorks owners. To obtain the upgrade simply return your current disc-1, together with your serial number. We will return a new disc as soon as we can. Please be patient because we have thousands of upgrades to do, so it may take several weeks. To ensure that your upgrade is dealt with quickly, please include a self-addressed return label.

Better sprite handling

ArtWorks now detects continuous tone (contone) sprites and is able to colour them. RISC OS 3 introduced sprites that can use *any* 256 colours, rather than the older fixed 256 colour format. Our ScanLight software is able to produce such sprites in which the image is shown as 256 levels of grey. A sprite that has 256 shades of the same colour is called a contone sprite. With ArtWorks 1.1 it's possible to alter the start and end colour of contone sprites. So rather than having

a picture range from black to white, it is now possible, for example, to have the colours range from pale brown to dark blue, as in the example below.



Preview mode

ArtWorks can now show the current drawing in a full screen preview mode in which there are no scroll bars or tool palettes etc. In this mode it isn't possible to edit the drawing, but it is possible to zoom and push the picture around with the hand tool. Preview also supports the 15bpp (32,000 colour) screen modes for anyone who has a ColourCard. In the 32,000 colour modes the screen dithering is not visible and so, for

example, produces absolutely perfect graduated or radial fills - an improvement which is far more noticeable than you might imagine.

Sprite info box

The new Sprite Object Info dialogue shows the size of a sprite in terms of memory and physical size, also the resolution (in dpi) at its current scale.

Sprite object info			
Name:	scan_image10		
Width:	316	Height:	224
Bytes:	72876	Colours:	256
Mask:	No	Dpi:	157
X:	15.12mm	Width:	50.83mm
Y:	85.2mm	Height:	36.83mm
		Scale:	57
		Aspect:	100
<input checked="" type="radio"/> View <input type="radio"/> Process <input type="radio"/> Contone			
		Cancel	OK

Background tracing

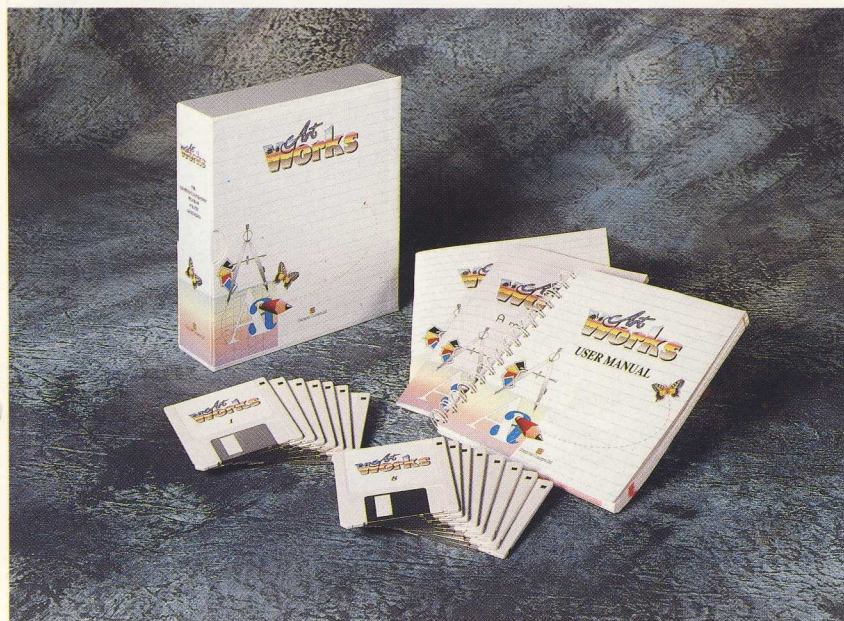
The background layer is now shown at half intensity. This is so that scanned images or other objects can be traced more easily.

Outline print option

A small addition to the print option now permits drawings to be printed in outline mode.

Network versions

We can now provide versions of ArtWorks that run on most networks (see page 4 for further details).



Mapping with Artworks

Producing really neat maps is usually a very difficult process, but Sean Sollé describes how easy this can be with Artworks, aided by a document scanner.

The problem with using maps to give directions is either far too much detail or not really enough (directions scribbled on the back of an envelope). Yet anything in between is extremely time-consuming to produce and, worse still, unless you're highly skilled it tends to look appalling!

With Artworks, aided by a scanner, you can actually achieve stunning results with very little time or skill involved. Maps like this are perfect for party invites, directions to a company or event, or any other application where specific directions are needed.

1. Create an original

The first step is to create an original rough map. I would suggest making a hand-drawing with the aid of a printed map for reference. You might be tempted to scan a printed map, but be careful about infringing the copyright.

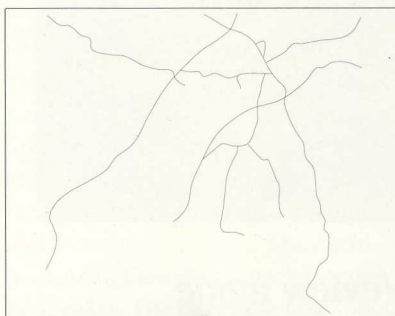
2. Scan the original

The next step is to scan your rough sketch, trying to retain as much detail as memory will allow.

3. Drop into Artworks

Drop the scanned image into Artworks in the background layer. Assuming you are using Artworks 1.1, the image will appear to be at half-brightness, making it perfect for tracing over in the foreground.

4. Trace the image

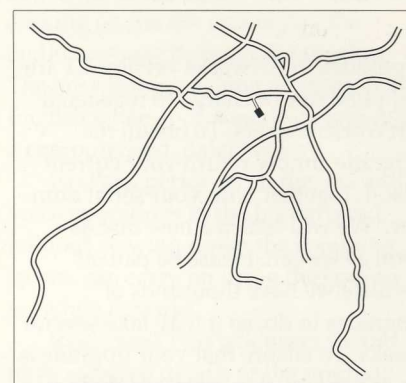


Ignoring the thickness of roads for the moment, use the Artworks freehand tool to follow their routes. For particularly bendy country lanes, using the curve tool to add short stretches may be easier. Be careful at road junctions - avoid the temptation of joining paths or you may end up with unwanted closed shapes.

5. Road widening

This is the stage where the finished map takes shape in just a few steps. Once you're satisfied with the amount of road detail, increase the line thickness of the roads to match the template image beneath, or even wider for a better appearance. Now clone (⌘K) the roads to create a second identical road network in front of the original.

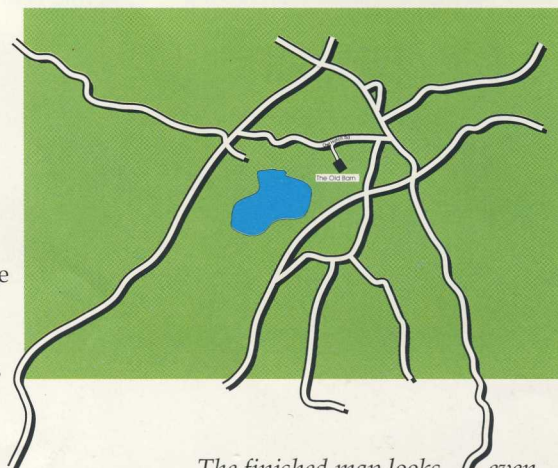
The selected lines are now on top, so change their line colour to white, and reduce line width by about 25% to expose the wider black roads beneath and produce perfect road outlines.



6. Add detail

If you want to add further detail, it's worthwhile grouping the roads before cloning. Making another clone and nudging it down slightly you create the drop-shadow effect shown here.

Additional physical details should be added last of all, ideally on another layer. A fourth layer could be used to add legends (the fit-text-to-curve option is invaluable here!). Remember to hide or perhaps delete the background layer when you're finished.



The finished map looks better with a background even layer to heighten the contrast of the roads. It looks excellent in colour, but perhaps that's just showing off!

RISC OS 3 Compatible Printer Drivers

As many of you know, we have been working on new RISC OS 3 versions of our printer drivers for some time now. Our current printer drivers are compatible with RISC OS 3, but do not provide support for some new RISC OS 3 features such as rotated text and sprite printing.

The RISC OS 3 versions are nearing completion. They won't be ready for the Acorn User Show in April, but will be on demonstration.

The new versions offer several new features. Firstly they support printing of rotated sprites and text from applications such as !Draw and can print ROM fonts. Secondly they can share the icon bar with other printer drivers so that you switch from one printer to another just by clicking on the appropriate printer icon. Thirdly by using a version of our draw module (used in ArtWorks) we have managed to significantly increase the printing speed of text and draw files.

Other new developments include full colour separation abilities, even for monochrome printers such as the BJ10ex and BJ200 printers. This means that (if you can find the appropriate colour inks) you can produce full colour prints.

Finally, we are providing a first for Acorn printer drivers - program-

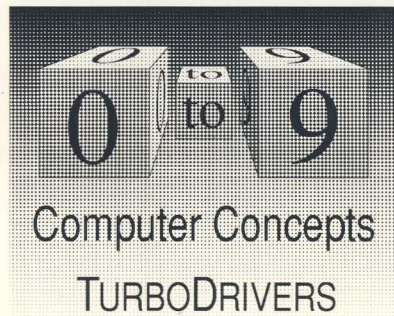
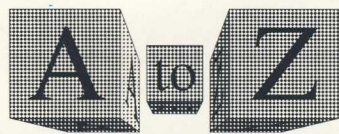
mable half-tone screens. This is a feature available on all PostScript printers and allows the system of producing greyscales to be controlled. Normally printers use a system of evenly spaced dots of varying size to simulate different levels of grey. This is called the halftone screen. On all printer drivers for Acorn machines this pattern of dots has been fairly limited. PostScript printers on the other hand have the ability to change halftone screen density (ie the spacing of the dots) and the screen angle (the alignment of the dots along the page) and the screen type. The screen type is usually just circular dots. Other common screen types include crosshatch and line screens. A line screen, as its name suggests, is made from lines rather than dots.

Apart from the ability to change the screen pattern just for special effects, it allows the user to have complete control over the fineness of the halftone screen versus the number of grey-levels produced. There is a direct relationship between the coarseness of the halftone screen and the number of grey-levels that can be simulated. So, for example, by using bigger dots a larger number of grey-levels can be reproduced, but the dots themselves become distracting. On the other hand, by using a very fine

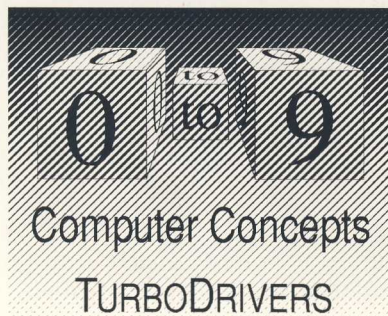
halftone screen (ie the dots are small and very close together) this produces very smooth greys, but cannot simulate large number of different grey-levels.

The new printer driver provides five different screen types and allows the user to set the screen angle and screen density, just as you can with expensive PostScript printers. So you now have complete control over the halftone screen and can choose different screens for different types of documents. For colour printer users the screen angle can be set independently for each of the ink colours and so is the first Archimedes printer driver to provide technically correct colour half-toning.

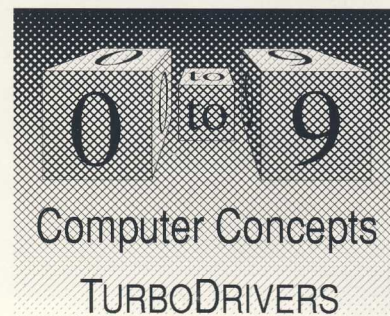
Upgrades will be available free of charge for all owners of Canon Laser printers (not Qume printers) and purchasers of the TurboDrivers. However, only registered users will be entitled to this free upgrade - so if you haven't returned your reg card - do so now. To obtain your free upgrade return your existing printer driver disc one. Make sure you include your serial number and name and address! We expect to be handling a large number of these upgrades so it may take us a while to get through the backlog - please be patient with us.



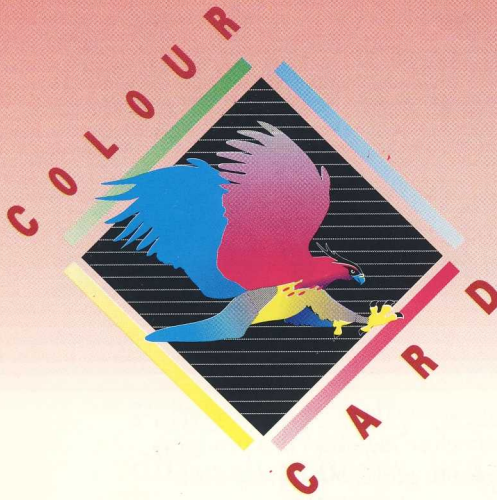
54lpi, spot screen, 0°



36 lpi, line screen, 45°



36 lpi, crosshatch screen, 45°



ColourCard

...even better !

ColourCard is now even better, following a recent 'software' upgrade to combat the single area of criticism.

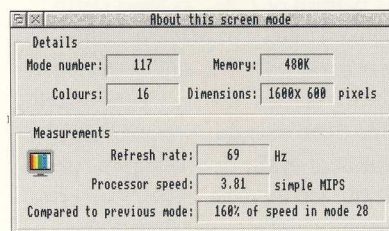
Design of a new product often involves compromise, and ColourCard was no exception. We had two main objectives which conflicted with each other: We wanted maximum processor speed and maximum screen refresh speed. However, the more times per second we refresh the screen, the more processor time is required, and the slower the computer runs. The compromise we reached was to refresh only 12 times per second - just enough, we thought, so that users wouldn't notice any significant problem. This would provide the best possible speed for the tasks running on the computer.

The result of our compromise was predictable - you can't please all the people all of the time. Some reviewers noticed that while using ColourCard a slightly undesirable 'shearing' effect could be observed when moving windows or other objects rapidly around the screen. Any program running animation was also a problem, resulting in very jerky movement. The 'other graphics card' on the market chose faster screen update in preference to maximizing speed, so made ColourCard look poor in our one area of compromise. Each card had its advantages and disadvantages.

So what could we do about this? Normally we wouldn't be able to do very much at all, because the design choice is built into the hardware. However, because we used a new type of custom chip which we can actually re-configure on the fly, we have been able to change the way ColourCard works by a software change alone. Not only have we been

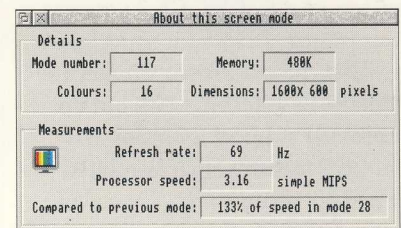
able to change the design from one way of working to another, but we've put the choice into the hands of the user as a software selectable option.

To demonstrate the point, an updated version of FlipTop provides more information on the current screen mode:



This includes information on the current mode's refresh rate. The above dialogue shows that running on an ARM2 machine the current screen mode of 1600x600 pixels allows the computer to run at 160% of the speed of the considerably lower resolution Acorn mode 28.

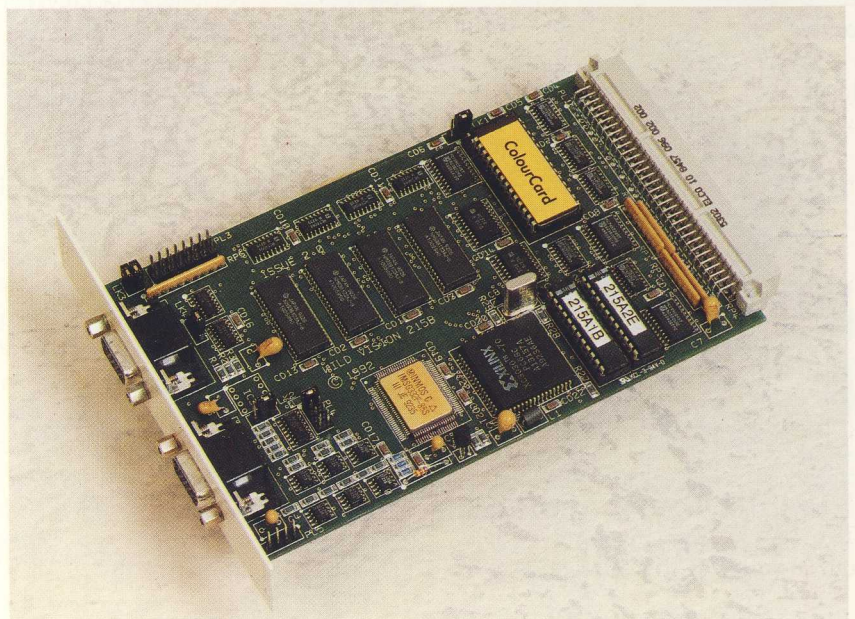
The following dialogue shows the computer running 20% slower when using the faster screen update speed. Subjectively the computer doesn't appear to slow down much since screen update is faster.



So from being in a position where some people regarded our product as inferior (in this one aspect alone), we now have a product that is superior since we give the user the flexibility to determine the screen update speed.

The technology of programmable gate arrays that allows us to change and re-configure the hardware really is amazing. The fact that we can re-design the circuitry of the ColourCard and provide this new functionality just as a software upgrade on disc proves this fact. There is no doubt that 'soft' hardware is the future.

In summary, the ColourCard is the only graphics accelerator card that offers video pass through for complete backward compatibility, 32,000 colour screen modes and programmable screen update speed, all supplied as standard.



Publishing Pack

With the recent release of the BJ200 inkjet printer it's possible to create a very powerful and complete desktop publishing system at a lower cost than ever before. We are bundling together the BJ200, Impression Junior and the Scanlight 256 image scanner in a single package, called the Publishing Pack, all for less than £500.

Each of these packages complements each other perfectly. The printer is probably the best inkjet in its class - 360dpi, able to reproduce top quality scanned images and text (practically indistinguishable from a laser printer) and thanks in part to the TurboDrivers - the fastest printer in its class.

ScanLight 256 is quite simply the best hand-held scanner for the Archimedes. Able to capture photographic quality images, it is supplied with software that provides image enhancement capabilities. This is the simplest way to get quality pictures into your documents. The ScanLight scanner requires an interface board to be installed inside the computer (any user should easily be able to manage this) and we can provide versions for all Archimedes computers. Please be sure you specify which computer you have when ordering.

Impression Junior is an extremely flexible low-cost desktop publishing package. It is part of the Impression family, which has become the most successful word processing/DTP program on the Archimedes. Impression is used by tens of thousands of people as their day-to-day word processor. Indeed it is perhaps the ideal combination of word processing capabilities and desk-top-publishing features. It's easy, for example, to position graphics anywhere on the page, and to re-size them instantly. Text automatically flows around the outside of the graphics. Impression

Junior supports any Acorn outline font, has advanced capabilities such as spell-check as you type, very fast screen update, cut, copy, paste of graphics and text and in-memory data transfer to other applications. The latest version now supports Art-Works files in addition to Sprite and Drawfiles. Finally, if your DTP requirements increase, you can even upgrade from Impression Junior to Impression II at a very attractive cost. The publishing pack is ideal for educational desktop publishing or for the office at home. It provides all you need to produce top quality documents - you just supply the computer.

To make this package even more attractive we are giving Impression Junior free when you purchase the BJ200 and ScanLight products together. Taking into account the discount we already offer on the BJ200 printer, this means you can save over £200 on the recommended retail price (inc VAT) of the individual components. Look at the standard prices and compare the total

PUBLISHING PACK	
Product	MRRP
BJ200 Printer	£399.00
ScanLight 256.....	£199.00
Impression Junior	£89.00
Total.....	£687.00
VAT.....	£120.22
Total including VAT	£807.22
Publishing Pack	£498.00
VAT.....	£87.15
Publishing pack inc. VAT	£585.15

with our Publishing pack price.

Note: A £10 carriage charge should be added for purchases by mail order.

To see exactly what this combination is capable of, please 'phone for a sample page printed on the BJ200, produced using Impression Junior and containing an example ScanLight scanned picture.

2Mbytes RAM recommended. Compatible with all Acorn computers - please specify computer model when ordering. Finally, just in case you are not completely satisfied with the system, we offer a 14 day, no-quibble, money back guarantee.





Get the most out of your
Computer Concepts
products with...

Hints & Tips

If you're having problems with a Computer Concepts product, or if you have a handy hint to pass on to other users, we would like to hear from you. Here's a bumper collection of handy hints and tips that will help you make the most of our products.

ArtWorks Keep position when copying between documents

Usually when you copy or cut an item then paste it into another document it's placed in the centre of the window. However, if you hold down the Shift key while selecting the Paste option (or press Shift-Ctrl-V), the item will be placed at exactly the same position in the new document as it occupied in the source document.

Artworks View Artworks files even without Artworks

How can you see the drawing inside an Artworks file without having Artworks? Until recently you couldn't, but now we've created !AWViewer - a stand-alone Artworks viewing utility.

AWViewer is included in the ArtWorks version 1.12 package (and on the 1.12 upgrade disc). Using the Artworks installer version 1.12 will automatically add AWViewer in the same directory as Artworks.

Impression II owners can also upgrade to Impression 2.19 which allows Artworks files to be dropped straight into a frame. This way you can see them without having to use the separate AWViewer program.

Artworks & Impression Printing long banners

Printers with continuous stationery can be used to make long banners with Impression or ArtWorks. In both cases you will need to define a very wide custom landscape page. Set the height of the page to be the width of your printer paper.

Configure your printer driver (this varies from driver to driver - consult the relevant user guide) to accept very long sheets of paper - try two metres to start, then increase by experimentation to determine your printer driver's maximum capability - most fall over at about 7.5m.

Create your banner, and print it sideways ... But remember that banners are only suitable for those special occasions where decimating rainforests is judged socially acceptable.

PC Disks Problems with PC high density floppy discs

This is not a problem which relates to a Computer Concepts product, but is useful to know about nonetheless.

When the Archimedes writes high-density PC (1.44MB) floppy discs, it only appears to write the last

sector when you dismount the disc. If you just close the window and remove the disc the file is incomplete because of the missing last sector. If you look at the file in an application it looks as if it's all there. The solution is to always dismount HD discs before you remove them from the drive.

This problem only seems to affect high density PC discs (1.44MB); low-density PC discs (720KB) and high-density ADFS discs don't seem to suffer this problem.

TurboDrivers Using Turbo- Drivers with RISC OS 3.1

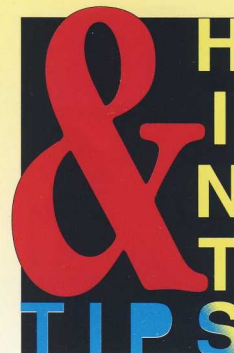
The current Laser Direct, TurboDrivers and PrinterFP (FaxPack) are RISC OS 3.1 compliant (see p10), but internally they use the RISC OS 2 PDriver module. If you need to quit any of these printers and use the RISC OS 3 printer driver (!Printers), a warning message will appear saying:

!Printers needs PDriver 3.16 or later.

Now, instead of switching off the machine all you need to do is kill the PDriver module used by our products, and restart the PDriver module within RISC OS 3.1. If you want to do this automatically whenever you run !Printers, all you need to do is load the !Run file within !Printers into !Edit and add the following lines:

Get the most out of your
Computer Concepts
products with...

Hints & Tips



RMkill Pdriver
RMReinit Pdriver

The !Run file is found by holding down the shift key and double-clicking on the !Printers application.

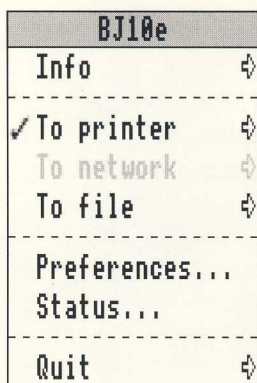
See also the article on page 9 describing the forthcoming RISC OS 3 compatible version of the TurboDrivers which will also cure this minor problem.

TurboDrivers Using Turbo- Drivers with limited memory

Some of our customers who use the TurboDrivers on a floppy disc based machine have suffered problems by running out of disc space when printing their documents. Whilst the latest versions of the TurboDrivers do have an option to print from RAM, you need to have at least 1Mb of free RAM before attempting to print. If you rely upon a backup copy of the TurboDriver disc, then there isn't enough free disc space in which to queue!

TurboDriver will create its own temporary file within the !Scrap application. !Scrap is where an application can store any temporary information it needs to.

A copy of !Scrap is supplied on the TurboDriver disc. Copy it onto a newly formatted blank disc, then name the disc PrintQueue. Next, when you have copied !Scrap onto the disc, double click on its icon. Although nothing will appear to happen, the computer now recognises this disc as the location of the temporary storage area. Leave the filer window open on the desktop, ready for a later step.



Now, double-click on the TurboDriver (inserting the appropriate disc if necessary) to load it into memory and then click the menu mouse button over its icon. From the menu (above), drag the pointer on top of the "To printer" option which will display the "Queue files:" dialogue.



Now, drag the blue folder icon into the filer window of the PrintQueue disc that you just created. This lets the TurboDriver know that it should queue its print information on the PrintQueue disc.

Finally, so that you don't have to go through the whole process every time you switch on the computer, select the TurboDriver "Preferences" option and then save the current settings.

Current versions

At Computer Concepts we continuously improve our products. Between major upgrades there are frequent minor improvements performed. At any time you can return your original program discs and we'll supply the latest revision, free of charge.

Changes are often very minor, so there's no need to get every update; just check every few months to see if you have the latest version. If you have a specific problem, check your version and if it's our latest release, supply us with full details so that we can investigate further. If it's an older version then upgrade.

Listed below are the current versions on release at the time of printing. If the version you have is significantly earlier, return to us your original master disc and we'll send back the latest version to you.*

When ordering upgrades, please be patient and remember that we handle thousands of upgrades free of charge and cannot always offer a rapid response.

Impression	2.19
Impression Junior	1.19
Equasor	1.02
Scan-Light Plus software.....	2.01
LaserDirect	2.09b
Artworks	1.12
Compression	1.17
Fax-Pack	2.00
Business Supplement	2.11
TurboDrivers.....	2.10

* Upgrades are supplied to registered customers only. Computer Concepts Ltd. reserves the right to refuse supply of free upgrades.

Get even more from your
Computer Concepts
products with...

Hints & Tips

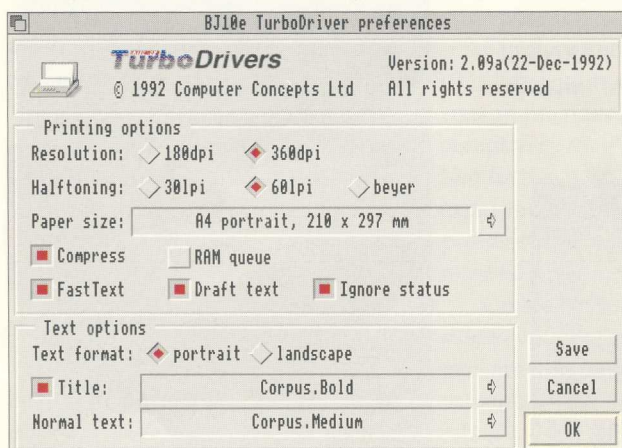


TurboDrivers & LaserDirect Curing the screening effect

A few people have commented on an unexpected patterning fault which occurs very occasionally when printing with LaserDirect or the TurboDrivers under RISC OS 3.1. The effect is such that the first page printed is perfect, but subsequent pages print as though the resolution of the printer has been reduced, eg, dropping from 300dpi to 180dpi, to

printer driver icon on the icon bar (see below). The TurboDrivers are changed by menu-clicking on their icon on the icon bar, selecting Preferences, and switching on the FastText option (once again, see below).

The FastText option uses the Computer Concepts very fast text rendering module. Unfortunately, on current versions of the printer drivers, this FastText option does not print the oblique variants of the Homerton or Corpus fonts in the RISC OS 3 ROM. In order to overcome this restriction you can make the system use the old disc based fonts instead. If you have a hard disc there is little disadvantage in doing this.



The TurboDriver preferences dialogue. The FastText option should be turned ON.

75dpi, etc. We refer to this problem as the screening effect. It can occur with any resolution setting - 600x600, 600x300 and 300x300 dpi on the LaserDirect, and either 360 or 180 dpi on the TurboDrivers. On very rare occasions it can even occur when using the FaxPack printer driver.

This effect can be cured by switching ON the corresponding FastText or QuickText option within the printer driver. In the LaserDirect or FaxPack software this setting is accessed by select-clicking on the

To use disc based fonts rather than the ROM fonts you have to copy the Homerton and Corpus fonts from an old RISC OS 2 fonts disc (eg Impression disc 4) into a !Fonts directory on your hard disc. You must then double-click on this !Fonts before starting any application which needs outline fonts, such as Draw or Impression.

If this !Fonts directory uses an old copy of the font manager it may be necessary to update the !Run file inside this directory to make sure it uses the RISC OS 3 font manager. Use !Edit to alter the !Run file within !Fonts to read as follows:

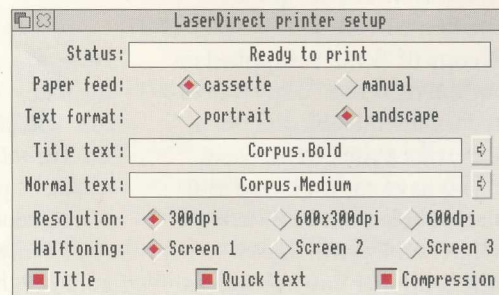
```
| !Run file for !Fonts (version
| 0.11, 10-May-89)
|
| Iconsprites <Obey$Dir>.!Sprites
|
| RMEnsure FontManager 3.07 RMLoad
| <Obey$Dir>.Fonts
```

The last line above is important, and is the only line you should change. It would previously have read:-

```
RMEnsure FontManager 2.42
RMLoad <Obey$Dir>.Fonts
```

This will ensure that the RISC OS 3 font manager is used rather than an older version. The newer version will work quite happily with all RISC OS 2 fonts.

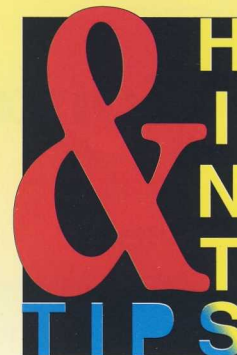
The above technique will allow existing LaserDirect or TurboDriver users to use the the FastText feature with RISC OS 3. Alternatively we will shortly be releasing new RISC OS 3 versions of our LaserDirect and TurboDrivers which overcome these problems completely. See page 9.



Above: The Laser Direct Setup dialogue. The Quick text option should be turned ON.

Get even more from your
Computer Concepts
products with...

Hints & Tips



Artworks Locating the problem points in an open object

One of the most frustrating things you can encounter when creating a complex object is to have an accidental break - you just can't see where the lines fail to join.

Take a look at the following example. England, Ireland, Scotland and Wales are all supposed to be closed paths to make solid, filled, objects. However, somewhere in the complex outline of England there must be a break where the line ends don't join. We know this because it should be filled white, yet it remains transparent.

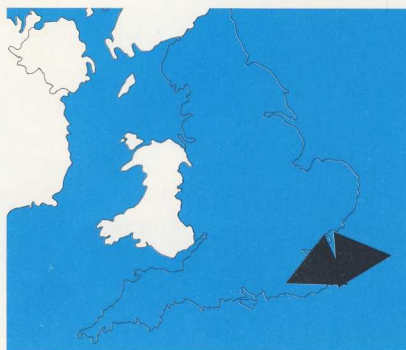


The first thing everyone tries to do is find the break by zooming in at a large magnification. But even if we think we know where the problem lies, zooming in still fails to reveal the break in the lines when the gap is



very small. The end points might be very close indeed, but they actually have to meet to close the shape.

Now here's the solution. Ensure that the line thickness is greater than zero (a zero width line actually draws as one pixel wide on the particular output device). Select the line and give it arrowheads - quite large ones to make them easily visible.



Instantly we can see exactly where the problem lies, because the huge arrowheads are drawn on the open ends of the complex line. Now you know exactly where the lines fail to join, so you can select the zoom tool and drag

a small region around the arrows to zoom right in, then move one of the line ends on top of the other to close the shape.



Immediately the shape is closed and shows as a white-filled solid object. The map is complete.

Artworks & Impression Saving disc space in imported drawings

Now that you can import Artworks files straight into an Impression frame (using the latest version of Impression), it's worth remembering that Artworks files can include a large undo buffer. To avoid unnecessarily large Artworks files in Impression, select the Choices option in Artworks and turn OFF the Save Undo option. Drawings will then be as small as possible when saved.

Contents

News 3 - 5

Acorn's Advance, see page 3

Training courses, see page 3

Artworks competition, see page 4

Site licences, see page 4

The Acorn PocketBook, see page 5

Fax-Pack Plus 6

Fax-Pack has just undergone a major upgrade, adding file transfer and even answering machine facilities.

Artworks 1.1 8

The first upgrade to Artworks since its release. Find out what's new in the most popular drawing program.

Mapping with Artworks 9

Creating small maps is a difficult business, but here we show how using Artworks can make it surprisingly easy to create a very professional result.

RISC-OS 3 compatible 10 Printer drivers

Fully RISC OS 3 compatible printer drivers are close to completion with many new facilities promised. See page 10 for full details.

The Publishing Pack 11

If you're starting out with publishing on the Archimedes then we've got the answer - the new Publishing pack. Software, scanner and printer for an amazing bundle price. See page 11 for details.

Hints & Tips 12 - 15

A larger than usual collection of hints and tips about using the Archimedes with Computer Concepts products.

Product Guide 16

The complete one-page summary guide to Computer Concepts products.

Editorial

Welcome to the seventh edition of The Archimedean. This issue is just in time for the Harrogate Acorn User Show. It's always a pleasure to meet our customers face to face and we hope to be seeing even more of you from the North of the country this time. We hope you'll be able to come and see all the latest products.

In the previous issue I indicated the potential which we think PhotoCD has to offer, and hoped that Acorn would licence the technology from Kodak. Well, just as we went to press we heard that Acorn had in fact just signed the necessary Kodak licences. We think this is an excellent move on Acorn's part and means that we will see the ability to read PhotoCD pictures directly into the Acorn machine before too long. As I understand it the best guess is that the software will appear around the middle of the year. Acorn has also announced a new CD-ROM drive that is based on a double speed CD ROM reader. Not only is it PhotoCD compatible but it has a data transfer rate of twice the usual speed. This means it can read data at around 300K per second, which is not wonderfully fast by hard disc standards, but is very

fast for a CD drive.

At present it is not possible to publish full colour pictures (photographic images) direct from the Archimedes. We will soon have a source of images in the form of PhotoCD and, to some extent, we can already transfer these from PC. We also have the ability to preview images in glorious 16-bit colour with a ColourCard. However, so far nothing will output the colour separations necessary for printing on a traditional four colour press.

We are working on versions of Impression and ArtWorks that can read and understand 24-bit colour images and I expect these versions will be around by the middle of the year - more details of this in a later issue. Also watch out for new developments in low cost colour printers some time later this year...

Duplicate or incorrect address labels

If you receive more than one copy of this Archimedean or if your name and address label is incorrect, please contact us so that we can correct your records. This will help us save time, money and also paper.



Computer Concepts Ltd

Gaddesden Place, Hemel Hempstead, Herts. HP2 6EX
Tel 0442 63933 Fax 0442 231632

© 1993 Computer Concepts Ltd

The Archimedean is issued free of charge to registered owners of Computer Concepts' Archimedes products.

Production

This issue of The Archimedean was created entirely in Impression 2, using an Archimedes 440 with 4MB RAM and a 20MB hard disc. All proofing and layout checks were output through LaserDirect. Final negative film was created from PostScript output files through a Linotronic 300 imagesetter. All colour separations were created with the aid of The Impression Business Supplement. Monochrome photographs were scanned using ScanLight 256 or ScanLight Professional and placed in their required positions.